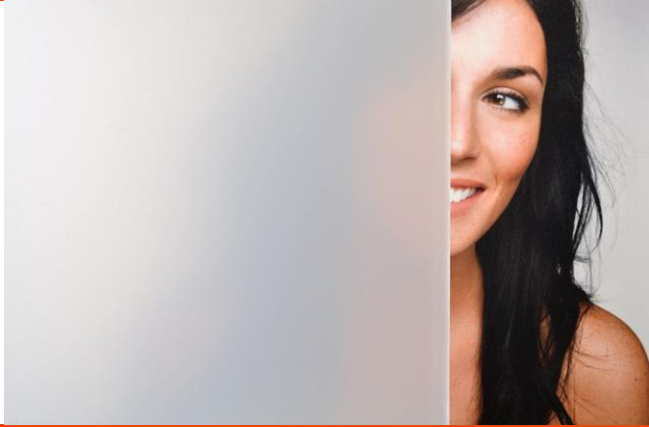


## SOLYX® Glass Finishes SXWF-WM White Matte



### Product Description

SOLYX® SXWF-WM White Matte is a translucent frosted polyester film with a matte finish. It provides semi-obscured visibility and good light transmission.

#### Specifications

Product Code	SXWF-WM
Product Family	Simple Frosted
Film Type	Polyester
Adhesive Type	Pressure-Sensitive
Usage	Interior or Exterior
Available Width(s)	12", 24, 36", 48", 60", 72"
Full Roll Length	100 linear feet (30.5m)
Thickness	2 mil
Shading Coefficient	0.82
Visible Light Transmission	11%
UV Transmission	<1%
Solar Energy Absorbed	22%
Glare Reduction	38%
Infra-Red Transmission	14%
Total Solar Energy Rejected	58%

### Product Construction

#### Face Film

2 mil Polyester

#### Adhesive

Clear, Pressure-Sensitive

#### Release Liner

Silicone Coated

### Product Details

SOLYX® SXWF-WM White Matte is a translucent frosted polyester film with a matte finish. Manufactured with a silicone coated liner which protects the clear, pressure-sensitive adhesive, it is designed for application to interior glass, single- or double-pane, and exterior facing glass as well as on exterior applications. This film is ideal for privacy, decorative, or architectural applications.

#### Flammability Rating

This product meets ASTM E84 and is classified as Class A as defined in NFPA 101, Life Safety Code®.

#### LEED Credit EQ 4.1 Low Emitting Materials, Adhesives & Sealants

This product has zero VOC content according to 40 CFR 59, Subpart D (EPA method 24).

### Installation and Warranty

#### Installation

Installation should be in accordance with the manufacturer's installation instructions. This film is applied using the same tools and techniques used for installing window tinting films.

#### Warranty

This SOLYX® product will be free from defects in material and manufacture for a period of ten (10) years from the date of installation. See warranty information for specific details.

### Product Distribution and Contact Information

#### Distribution

SOLYX® Decorative Films are available through authorized Installing Dealers, Distributors, or directly from Decorative Films, LLC.

Samples submitted upon request.

#### Contact Information

Decorative Films, LLC

1-888-657-5224

[www.decorativefilm.com](http://www.decorativefilm.com)

MADE IN THE USA





[www.decorativefilm.com](http://www.decorativefilm.com)

Decorative Films, LLC

3909 Cornell Place, Frederick, MD 21703 | USA

## This film does not contain any of the following:

Vanderbilt University, Peabody Phase 1 - HEM  
Centric Project #17035  
10 September 2018

01 8113  
SUSTAINABLE DESIGN REQUIREMENTS

### PART 2 PRODUCTS

#### 2.01 LBC IMPERATIVE 08- HEALTHY INTERIOR ENVIRONMENT

- A. Interior building products that have the potential to emit Volatile Organic Compounds are required to comply with the California Department of Public Health (CDPH) Standard Method v1.1-2010, or international equivalent.
1. All products regulated by CDPH are required to comply.
  2. Refer to the Dialogue and the Health and Happiness Petal Handbook for specific guidance, including exceptions, on the Healthy Interior Environment Imperative requirements.

#### 2.02 LBC IMPERATIVE 10- RED LIST

- A. Projects cannot contain any of the following Red List materials or chemicals, unless appropriate Due Diligence documentation is provided.
1. Alkylphenols
  2. Asbestos
  3. Bisphenol A (BPA)
  4. Cadmium
  5. Chlorinated Polyethylene and Chlorosulfonated Polyethylene
  6. Chlorobenzenes
  7. Chlorofluorocarbons (CFCs) and Hydrochlorofluorocarbons (HCFCs)
  8. Chloroprene (Neoprene)
  9. Chromium VI
  10. Chlorinated Polyvinyl Chloride (CPVC)
  11. Formaldehyde (added)
  12. Halogenated Flame Retardants (HFRs)
  13. Hydrochlorofluorocarbons (HCFCs)
  14. Lead (Added)
  15. Mercury
  16. Polychlorinated Biphenyls (PCBs)
  17. Perfluorinated Compounds (PFCs)
  18. Phthalates
  19. Polyvinyl Chloride (PVC)
  20. Short Chain Chlorinated Paraffins
  21. Wood treatments containing Creosote, Arsenic, or Pentachlorophenol
  22. Volatile Organic Compounds (VOCs) in wet applied products
- i. Wet applied products must have VOC levels below the South Coast Air Quality Management District (SCAQMD) Rule 1168 for Adhesives and Sealants and Rule 1113 Architectural Coatings or CARB 2007 Suggested Control Measure (SCM) for Architectural Coatings, as applicable.
- ii. Containers of sealants and adhesives with capacity of 16 ounces or less must comply with applicable category limits in the California Air Resources Board (CARB) Regulation for Reducing Emissions from Consumer Products.