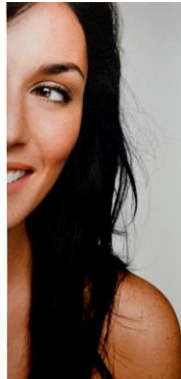


SOLYX® Glass Finishes

SXF-5050 Total Light Blocking Safety Film

SOLYX: SXF-5050
Total Light Blockout



Product Details

SOLYX® SXF-5050 Total Light Blocking Safety Film: This film is designed for application to interior glass, single or double pane and exterior facing glass.

Safe for use on all types of glass without the concerns of Thermal Shock glass breakage. This film can also be installed on exterior applications. Made of durable Polyester with a satin surface, perfect for privacy, decorative or architectural applications. The total nominal thickness is 5 mil. Manufactured with a silicone liner, which protects the clear, pressure-sensitive adhesive, and applied using the same tools and techniques for window films.

Product Description

SOLYX® SXF-5050 Total Light Blocking Safety Film This is lamination of multi layer white opaque polyester films coated with a permanent pressure sensitive acrylic adhesive and backed with a clear ultra smooth polyester release liner.

Specifications

Product Code	SXF-5050
Product Family	Architectural/Opaque
Film Type	Polyester
Adhesive Type	Pressure-sensitive
Usage	Interior or Exterior
Available Width(s)	60" (1524mm)
Length	100 linear feet (30.5m)
Thickness	5 mil
Visible Light Reflection	15%
Visible Light Transmission	Less than .5%
UV Transmission	0%
Total Solar Energy Rejected	46%
Solar Energy Absorbed	31%
Glare Reduction	100%

Product Construction

Face Film	Adhesive	Release Liner
5 mil polyester	Clear, Pressure-sensitive	Silicone

Installation and Warranty

Installation

Installation should be in accordance with manufacturer's installation instructions.

Warranty

This SOLYX® product will be free from defects in material and manufacture for a period of ten (10) years from the date of installation. See warranty information for specific details

MECHANICAL PROPERTIES

Structure	5 Mil.
Tensile Strength at Break	28,500 PSI
Break Strength	112 lb./inch
Elongation at Break	125%
Peel Strength	7 to 9 lb./inch

Brings untempered glass up to Tempered Glass Safety Standards

PASSES: ANSI Z97.1-1984

16 CFR 1201 U.S.G.S. Category 1: Break Strength 100PLI

Product Distribution and Contact Information

Distribution

SOLYX® Decorative Films are available through qualified Installing Dealers, Distributors or from Decorative Films, LLC.

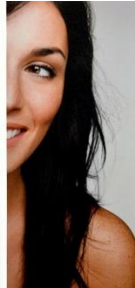
Samples submitted upon request.

Contact Information

Decorative Films, LLC
1-888-657-5224
www.decorativefilm.com

SOLYX® SXF-5050 White Total Light Blocking Safety film
Product Construction Sheet

SOLYX: SXF-5050
 Total Light Blockout



GENERAL DESCRIPTION:

This is lamination of multi layer white opaque polyester films coated with a permanent pressure sensitive acrylic adhesive and backed with a clear ultra smooth polyester release liner.

PHYSICAL PROPERTIES

ASTM D 3652
 Mil (micron) Adhesive: 0.8-0.9 (20-23) +/- 0.1 (3)
 Film: 4.5 mil +/- 10 %
 Adhesive: 1.2-1.3 (30-33) +/- 0.1 (3) V63 UV adhesive
 Liner: 1.4 (36) +/- 5 %
 Dimensional Stability (%) MD: 0.50 On Al panel at 160°F
 TD: 0.50 (71°C) for 24 hr.

ADHESION PROPERTIES**

Average Adhesion from oz/in (N/m)
 Stainless Steel 91 (1001) ASTM D 903 (Modified for Acrylic 104 (1144) 72 hr dwell time)
 Glass 81 (891)
 Polypropylene 8 (88)
 Expected Shear 100 + ASTM D 3654 Method A (1 hr (hours) dwell, 1 sq. in, 4 lb. load)
 Tack (gm) 470 ASTM D 2979
 ** For guidance only, not to be used for setting specifications. Due to the custom nature of this product the data presented are based on three or less production runs.

SERVICE TEMPERATURE RANGE -40°F to 302°F (-40°C to 150°C)

Product may lose embossing over 100°F (37°C)

MINIMUM APPLICATION TEMPERATURE 50°F (10°C)

STORAGE STABILITY Two years stored at 70°F (21°C) and 50% RH

SOLAR PROPERTIES:

Film Thickness	5 mil
Visible Light Transmitted	Less than .5%
Ultraviolet Radiation Rejected	100%
Total Solar Energy Absorbed	31%
Reflectance	15%
Total Solar Energy Rejected	46%

MECHANICAL PROPERTIES

Structure	5 Mil.
Tensile Strength at Break	28,500 PSI
Break Strength	112 lb./inch
Elongation at Break	125%
Peel Strength	7 to 9 lb./inch

Brings untempered glass up to Tempered Glass Safety Standards

PASSES:

ANSI Z97.1-1984
 16 CFR 1201 U.S.G.S. Category 1: Break Strength 100PLI

Warranty: The SOLYX® product will be free from defects in material and manufacture for a period of five (5) years from the date of installation. See Warranty information for specific details.