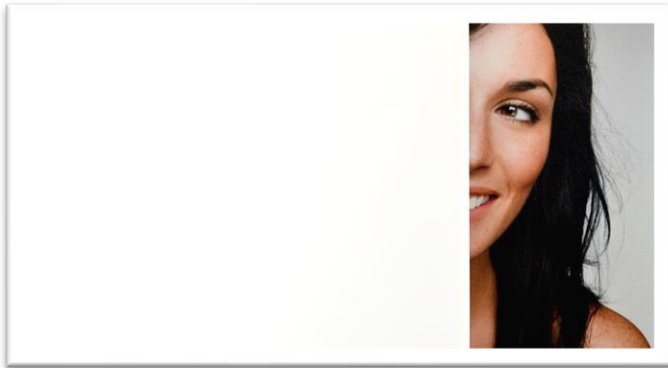


## SOLYX® Glass Finishes

### SXF-5050 Total Light Blockout



#### Product Description

SOLYX® SXF-5050 Total Light Blockout is a lamination of multi-layer, white, opaque, polyester films coated with a pressure-sensitive acrylic adhesive and backed with a clear, ultra-smooth polyester release liner. It has a glossy finish and is 100% opaque, providing a blocked view from either side.

#### Specifications

Product Code	SXF-5050
Product Family	Design-Free
Film Type	Polyester
Adhesive Type	Pressure-Sensitive
Usage	Interior and Exterior
Available Width(s)	60" (1524mm)
Full Roll Length	100 linear feet (30.5m)
Thickness	5 mil
IR Rejection	99.7%
Visible Light Transmission	1%-1.5%
UV Transmission	0%
Total Solar Energy Rejected	46%
Solar Energy Absorbed	31%
Glare Reduction	100%

#### Product Construction

##### Face Film

5 mil Polyester

##### Adhesive

Clear, Pressure-Sensitive

##### Release Liner

Silicone Coated

#### Product Details

SOLYX® SXF-5050 Total Light Blockout is a glossy, white, completely opaque polyester film that provides 100% privacy. Made of durable polyester with a satin finish, it is supplied with a silicone coated liner which protects the clear, pressure-sensitive adhesive. This film is safe for use on all types of glass without the fear of thermal shock glass breakage. It is designed for application to interior glass, single- or double-pane, and exterior glass. It is ideal for privacy, decorative, or architectural applications.

**NOTE:** This film does allow about 1-1.5% light transmission when facing direct sunlight.

#### Mechanical Properties

Structure	5 Mil.
Tensile Strength at Break	28,500 PSI
Break Strength	112 lb./inch
Elongation at Break	125%
Peel Strength	7 to 9 lb./inch

*Brings untempered glass up to Tempered Glass Safety Standards*

#### Passes: ANSI Z97.1-1984

16 CFR 1201 U.S.G.S. Category 1: Break Strength 100PLI

#### Flammability Rating

This product meets ASTM E84 and is classified as Class A as defined in NFPA 101, Life Safety Code®.

#### LEED Credit EQ 4.1 Low Emitting Materials, Adhesives & Sealants

This product has zero VOC content according to 40 CFR 59, Subpart D (EPA method 24).

#### Installation and Warranty

##### Installation

Installation should be in accordance with the manufacturer's installation instructions. This film is applied using the same tools and techniques used for installing window tinting films.

##### Warranty

This SOLYX® product will be free from defects in material and manufacture for a period of five (5) years from the date of interior installation and three (3) for exterior installs. See warranty information for specific details.

#### Product Distribution and Contact Information

##### Distribution

SOLYX® Decorative Films are available through authorized Installing Dealers, Distributors, or directly from Decorative Films, LLC. Samples submitted upon request.

##### Contact Information

Decorative Films, LLC  
1-888-657-5224

[www.decorativefilm.com](http://www.decorativefilm.com)

