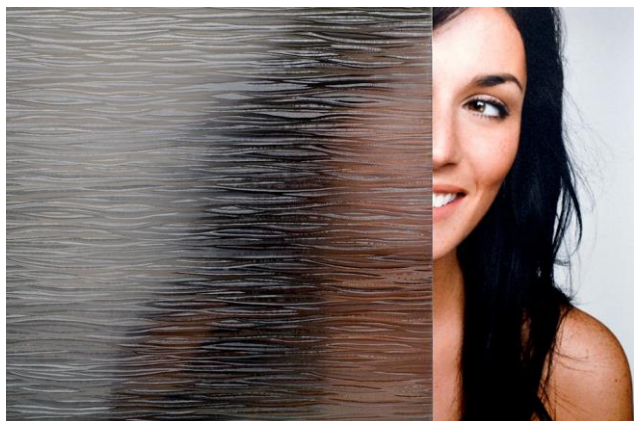


SOLYX® SX-SC570 Dark Waters (Static Cling)



SOLYX SX-SC570: Dark Waters

A fully removable and reusable Static Cling film ideal for obscuring daytime view and providing excellent shading with good lighting.

Specifications

Product Code	SX-SC570
Product Family	Static Cling
Film Type	Polypropylene
Adhesive Type	Non Adhesive Static Cling
Usage	Interior or Exterior
Available Width(s)	35"
Thickness	+/-6 mil
IR Transmission	35%
Visible Light Transmission (%)	15%
UV Transmission (%)	1%
Absorption	45%
TOTAL SOLAR REJECTED	56%

Product Construction

Face Film: 6 mil Polypropylene

Adhesive: Static Cling

Liner: Transparent Synthetic

Product Detail

SOLYX® SX-SC570: Dark Waters Translucent bronze/grey embossed vinyl film. Static cling, non-adhesive. Pattern runs horizontally across the width of the film. Has the appearance of ocean waves. Ideal for semi-obscuring direct visibility while allowing good light transmission. Films are recommended for application to interior glass and exterior glass (inside surface) or plastics and polycarbonate sheets. This film is made of durable Static Cling polypropylene film with an embossed textured surface and clear removable release liner.

Fire Rating

The product was tested according to ASTM E84 and is classified as Class A, as defined in NFPA 101, Life Safety Code®.

Installation and Warranty

Installation

Installation should be in accordance with manufacturer's installation instructions. Installed using the same methods for installing window films.

Warranty

This SOLYX® product will be free from defects in material and manufacture for a period of five (5) years from the date of installation. See Warranty information for specific details.

Product Distribution and Contact Information

Distribution

SOLYX® Decorative Films are available through qualified Installing Dealers, Distributors or from Decorative Films, LLC

Samples submitted upon request.

Contact Information

Contact Decorative Films, LLC at 1-888-657-5224 or www.decorativefilm.com