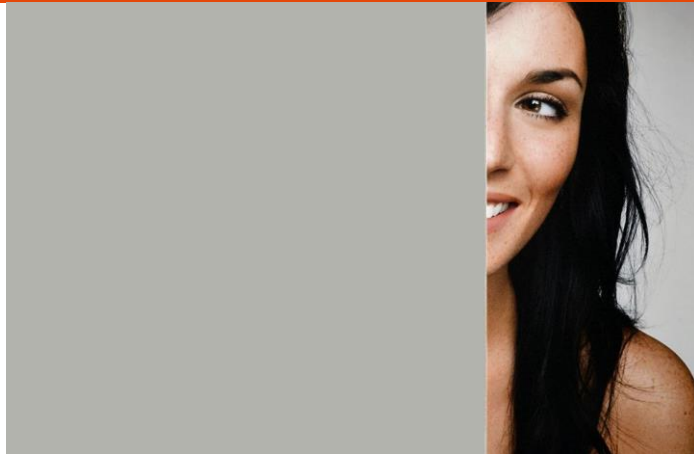


SOLYX® Glass Finishes SX-3134 Medium Grey Dusted Crystal



Product Detail

SOLYX® SX-3134 Medium Grey Dusted Crystal is a medium grey translucent vinyl film with an etched surface that simulates etched glass. Manufactured from premium cast vinyl, it is ideal for privacy, decorative, or architectural applications and can be installed on interior and exterior glass.

Flammability Rating

This product meets ASTM E84 and is classified as Class A as defined in NFPA 101, Life Safety Code®.

LEED Credit EQ 4.1 Low Emitting Materials, Adhesives & Sealants

This product has zero VOC content according to 40 CFR 59, Subpart D (EPA method 24).

Product Description

SOLYX® SX-3134 Medium Grey Dusted Crystal is a medium grey translucent vinyl film with an etched surface that simulates etched glass. It is an excellent privacy film that obscures visibility.

Specifications

Product Code	SX-3134
Product Family	Frosted
Film Type	Vinyl
Adhesive Type	Pressure-Sensitive
Usage	Interior or Exterior
Available Width(s)	60" (1524mm)
Full Roll Length	150 linear feet (45.72m)
Thickness	2 mil
Shading Coefficient	.93
Visible Light Reflectance	79%
Visible Light Transmission	6%
UV Transmission	<1%
Solar Heat Reflectance	7%
Solar Heat Transmission	76%
Solar Heat Absorbance	17%

Product Construction

Face Film

2 mil Cast Vinyl

Adhesive

Adhesive Clear, Pressure-Sensitive

Release Liner

Transparent, Synthetic, Plottable

Installation and Warranty

Installation

Installation should be in accordance with the manufacturer's installation instructions. This film is applied using the same tools and techniques used for installing window tinting films.

Warranty

This **SOLYX®** product will be free from defects in material and manufacture for a period of five (5) years for interior installations and three (3) years for exterior installations. See warranty information for specific details.

Product Distribution and Contact Information

Distribution

SOLYX® Decorative Films are available through authorized Installing Dealers, Distributors, or directly from Decorative Films, LLC.

Samples submitted upon request.

Contact Information

Decorative Films, LLC

1-888-657-5224

www.decorativefilm.com

PERFORMANCE & PHYSICAL DATA

PROPERTY	TEST METHODS	TYPICAL VALUE	
SURFACE FINISH	Gloss Meter 60° Reflection	4 - 20	
THICKNESS	Micrometer, Federal Bench Type	2-mil (50 micron)	
TENSILE STRENGTH	Tensile Tester with 2-in (51 mm) jaw separation; crosshead speed of 12 in/min. (5.1 mm/s), web direction	≥ 4.5 lb/in width	≥ 0.8 kg/cm width
ELONGATION	Instron Tensile Tester as above	≥ 150%	
SHELF LIFE	Free from excessive moisture, temperature, direct sunlight	3 Years from factory shipment	
APPLICATION TEMPERATURE RANGE	On clean, dry substrate	40°F to 90°F optimum	10°C to 30°C
HUMIDITY RESISTANCE	Applied to etched aluminum panels 24 hours prior to testing. 100% relative humidity 100° (38°) for 500 hours	No appreciable effect	
DIMENSIONAL STABILITY	158°F (70°C), 48 hours	0.010 – 0.020 in	0.25 – 0.50 mm
PEEL ADHESION	PSTC-1, 15 min	60 oz/in	.65 kg/cm
LINER RELEASE	TLMI, 300 in/min (127 cm/min) 2 in (51 mm) wide sample	150 g/2 in	30 g/cm

PHYSICAL PROPERTIES

Outdoor Durability

9 years when properly processed and applied (vertical exposure, unprinted film)

Minimum Surface/Ambient Air Application Temperature

40° F. (38° C)

Service Temperature Range

-40° F. to +225° F. (-40° C. to +107° C.) - Reasonable range of temperatures, which would be expected under normal environmental time and temperature conditions

Typical Film Caliper (w/adhesive)

.0025 to .0035 inches

Chemical Resistance

Resists mild acids, alkalis, and salts.

Water Resistance

Excellent resistance to water.

NOTE: Always pretest your specific substrates prior to actual application.

Shelf Life

3 years when stored in a clean, dry area, out of the direct sunlight, and at less than 100° F. (38° C)

