

SOLYX® Glass Finishes – Dry Erase Series

SX-2095 WHITE for WALLS



Product Features

- 1) Repositionable
- 2) Dry Install, no adhesives required
- 3) No long cure times – can be used immediately upon completion of install.
- 4) Compatible with any brand dry-erase marker
- 5) Custom Colors – Any Pantone or Benjamin Moore color at 1 roll minimum
- 6) Can be digitally imaged
- 7) Installs over any stable smooth substrate
- 8) Long roll put-up available
- 9) Ideal for home-owner installation – no special skills involved
- 10) Not as susceptible to roll edge damage as dry-erase wallcoverings.
- 11) Less susceptible to creasing during installation
- 12) Can be installed in wide range of temperature and humidity conditions
- 13) No need to reverse alternating drops in installing

Product Description

SOLYX® SX-2095 White Dry Erase film for WALLS is a 4.3 mil White Opaque film coated with a premium dry erase surface and a High- tack acrylic pressure sensitive grooved adhesive for dry installs.

Specifications

Product Code	SX-2095
Product Family	Specialty -Dry Erase
Film Type	Polyester
Adhesive Type	Pressure-sensitive-groove
Usage	Interior
Available Width(s)	60" (1524mm)
Length	50 linear feet (15.24M)
Thickness	4.3 mil
Visible Light Transmittance	0%
UV Transmittance	0%
Infrared Transmittance	0%

Product Construction

Face Film: 2 mil Polyester Premium Dry Erase Surface/2.3mil polypropylene barrier film
Adhesive: White, pressure-sensitive, grooved, solvent acrylic.
Liner: 90# Stayflat Paper liner

Fire Rating

The product complies with ASTM E84 and is classified as Class A, as defined in NFPA 101, Life Safety Code®.

Installation and Warranty

Installation

Installation should be in accordance with manufacturer's installation instructions.

Warranty

This SOLYX® product will be free from defects in material and manufacture for a period of three (3) years from the date of installation. See Warranty information for specific details.

Product Distribution and Contact Information

Distribution

SOLYX® Decorative Films are available through qualified Installing Dealers and Distributors.

Samples submitted upon request.

Contact Information

Decorative Films, LLC 1-888-657-5224
www.decorativefilm.com



3909 Cornell Place | Frederick, MD 21703 | USA

T: 888.657.5224 | F: 240.363.4818

SOLYX® SimGlas®

May, 2017

SOLYX®

Installation guidelines for SX-2095 White Premium Dry Erase for Walls.

APPLICATION ENVIRONMENT - Product is intended for interior use only.

APPLICATION SURFACE - Flat, smooth painted (non-vinyl) wallboards

Please note: A semi-gloss painted surface provides best adhesion. Flat paint or textured finish can be problematic along with any anti-graffiti coatings.

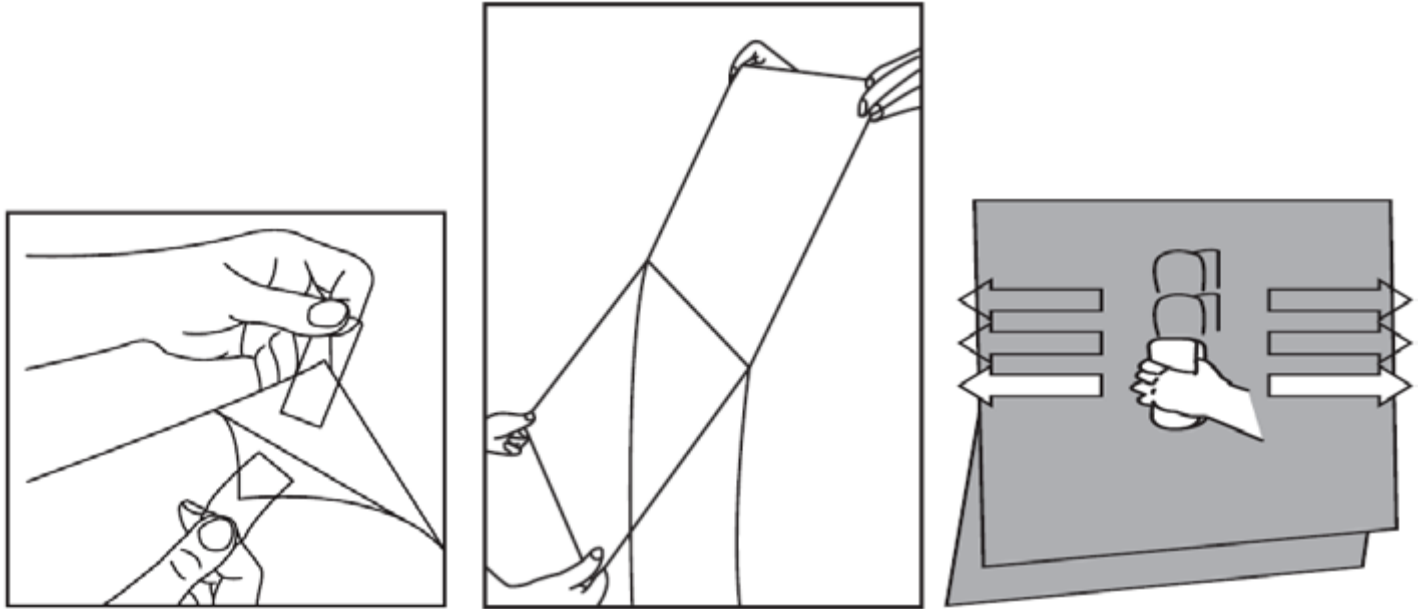
WALL INSPECTION AND REPAIR - This information is intended as guidance only. We recommend that all surfaces be tested for compatibility and removability. Factors such as the smoothness and cleanliness of the surface, as well as print, process, installation method, and size of the decal may impact the adhesion and success of the application.

- This product is designed to adhere to clean, smooth painted wallboards.
- Bubbles, cracks, or any other imperfections must be repaired before application. If repair requires the use of spackle, it should be primed over and painted, and allowed to cure.
- If the wall is freshly painted, please refer to the paint manufacturer's statement regarding dry time.
- If the wall surface needs cleaning only, clean with soapy water and isopropyl alcohol and dry with a lint-free towel.
- Apply a small swatch of the film to the prepared wall surface in an inconspicuous area and allow the swatch to dwell for 72 hours. Slowly remove the film at a 45 –90 degree angle and inspect for possible damage to the wall. If any paint is removed, re-inspect the wall surface for cure of the paint to the wallboard.

INSTALLATION - *Please note: the below information provides basic information on installation. Professional installers can be hired to ensure proper application of finished graphics. Contact the Professional Decal Application Association for information on member installers and services by visiting www.sgia.org/pdaa/.*

- Use of premask is not recommended.
- Film should be removed from its packaging, allowed to lay flat and acclimate to the room environment prior to installation.
- The minimum temperature is 50F (10C) with 50% relative humidity.
- Avoid applying to an area directly near a heater or source of condensation.
- Make sure your film is centered properly.
- Dry application. No wetting agent is recommended for application to wallboard or other wall coverings. Condensation left behind the film will cause the film to lift.
- Bend back approximately two inches of the release liner from the top portion of the film
- Be careful not to stretch the film, as films have memory and when stretched, will ultimately relax, causing lifting and failure.

- Using a felt-tipped squeegee, lightly squeegee the center top of the exposed adhesive area of the film, working the middle section of the film first. Use firm, even strokes as you work your way from the center to either side. Continue to slowly remove the paper liner, while squeegeeing horizontally with overlapping strokes, working from top to bottom and from center to sides. Be sure to squeegee the entire film surface to ensure adequate adhesion.
- Overlapping seams, if necessary, are recommended for full wall installation



ENVIRONMENTAL CONDITIONS/ REMOVABILITY

- Environmental conditions such as heat, humidity, condensation, air conditioning, exposure to chemicals and abrasion etc. can impact the installation, application life, and removability of the Film.
- Carefully pick at the top portion of the film getting the fingernail under the adhesive --working your fingers under the adhesive, use a 45-90 degree angle and carefully, steadily, slowly remove the graphic from the top working your way down to the bottom.
- If original liner has been saved, you can reapply the film to the liner.
- To save the film and reuse it, please make sure hands are washed removing dirt and oils from fingers/hands. If dirt /oils are on the hand, it can contaminate the adhesive.
- To save and re-use the Film at a later date, refer to the storage stability guidelines and wind the film out but do not wind into a tight coil.
- If consumer pulls too fast upon removal, they may cause the film to rip.

FLAMMABILITY

SOLYX Polyester/vinyl films with adhesive: When applied to surfaces- glass or plastic sheet:

Horizontal Burn (Flame Spread) ASTM D-635 inch < 1.0

UL 94 Rating UL 94 UL Classification V-O

Class A 0 -25 Flame Spread Index 0 -450 Smoke

Wall Graphics and Wall Lettering On Top of “Green” Paint

An uptick in wall graphics failing due to walls painted in Zero VOC paint.

Trends in interior decor are making it harder to apply wall graphics & letters.

As [noted in a previous article](#), new high end with stain blockers pose a problem for vinyl adhesion. Interior wall graphics marketers have a new nemesis in the form of “green” paint. Not emerald green or hunter green. We mean “green” as in environmentally friendly.

A new kind of interior latex is coming to market that is sold as “zero VOC” or “VOC free” paint. It sounds like a good thing, and may indeed hold benefits for air quality and public health. But it’s detrimental to the health of some of our customers because they’re pulling their hair out trying to understand why their wall graphics are failing. What is VOC free paint, and why is it ruining wall graphics? Here are the details as we know them.

What is VOC free paint?

To understand what VOC free paint is, obviously, we have to understand VOCs. The term VOC is an acronym for Volatile Organic Compounds. These compounds are called volatile because they are chemically unstable and degrade over time. VOCs are also found in a great many things including solvent based inks, plastics, and adhesives. The out-gassing of these compounds in newly manufactured vehicles produces what is commonly known as “that new car smell.” VOCs are also found in interior and exterior house paint. As the paint dries, these compounds are given off in the fumes. This curing process generally takes three or four weeks. This is why freshly painted walls cannot be decorated with vinyl until they’re completely cured. The VOCs get trapped under the vinyl and begin to chemically interact with the adhesive, causing it to fail, or become permanently fused to the wall.

Given this problem, one might think that VOC free paint would be an improvement designed to aid graphics installation. Not quite. The reason for VOC free paints is concern over the long term health effects of exposure to these fumes as they outgas. VOC free or “zero VOC” paint is being marketed as a healthier and more environmentally friendly alternative to paints that contain formaldehyde and other volatile organic compounds. [Click here](#) for more information from the American Lung Association about products that contribute to the indoor accumulation of VOCs.

Paints currently marketed as Zero VOC or VOC free include Yolo Colorhouse, Behr Premium Plus Enamel Low Luster, Benjamin Moore’s Natura® paint, and Glidden Spred®. Sherwin Williams offers several such paints including GreenGuard Emerald Interior Acrylic Latex, Harmony, Pro Industrial Zero VOC Waterborne Catalyzed Epoxy, Pro Industrial Zero VOC Acrylic Coating, and ProMAR 200 & 400 Interior Latex paint.

What’s the problem? Why Now?

Why are they causing such a problem now? The timing is due in part to the growing movement toward more sustainable and healthy products, which is a good thing. What has made it a problem for sign and graphics installers recently is a new program initiative from HGTV called “HGTV Green Home”. As more people are exposed to the Green Home message and choose to remodel with Zero VOC interior paint, wall graphics installations failures are increasing.

What is it about VOC Free paint that stymies wall vinyl? The answers are still coming, but ORACAL has begun research into the problem. Here’s a brief summary of their findings, shared with us by Josh Culverhouse of ORACAL tech support.

Removable, plotter cut wall graphics, produced with [ORACAL 631](#) matte vinyl, are releasing from the application tape to the wall much more easily on traditional formula egg-shell or satin finish latex paints, as opposed to the Zero VOC versions.

Printed contour cut and wall mural type removable wall graphics (produced with [ORAJET 3268](#) or 3268 wall printable vinyl) often will begin to drape or fall off, shortly after application to a wall that’s been finished with a Zero VOC latex paint. These failures are a combination of low adhesion levels, incompatibility with the Zero VOC latex paint, and the added weight of these types of graphics due to heavy ink loads.

Vinyl films with a permanent do perform slightly better, but not as well as they would when applied to a traditional formula latex paint finish.

What can you do? It’s not entirely hopeless. ORACAL reports that removable vinyl wall graphics *will* adhere to latex versions of Zero VOC paints, but it takes a lot more work to release the graphic to the wall. The vinyl must then be burnished into the slightly “stippled” texture of these paints to expedite the adhesion levels. Testing continues, so these are all considered preliminary observations and suggestions.

Recommended surfaces

Until a more effective solution comes to market, it is best to avoid selling wall graphics to commercial or residential customers who’ve opted for VOC Free paint. ORACAL 631 works best on flat enamel painted walls that have been allowed to cure for at least three weeks. ORACAL recommends applying 631 to smooth, semi-gloss or gloss enamel paint. If possible, avoid matte finish Latex paints and paints that contain anti-graffiti agents or stain blockers. For more details about the best methods for successful wall graphics installation using ORACAL 631, [please click here](#) to download the updated removable vinyl instruction sheet.

You may be wondering why it seems to be so difficult to make these graphics stick. As we’ve noted often in the past, these vinyl films were originally designed for temporary trade show graphics: application on smooth, flat, vinyl-friendly surfaces. They were not engineered for installation on painted interior walls. So if you’re selling these, keep that in mind. As home decor trends change and new types of paints come to market, it behooves you to find out what kind of wall textures and paints your customer have. Steer them toward vinyl-friendly paints when you can. When you can’t, do your best to set their expectations accordingly.

<http://www.signwarehouse.com/blog/wall-graphics-and-green-paint/> 4/18/2013