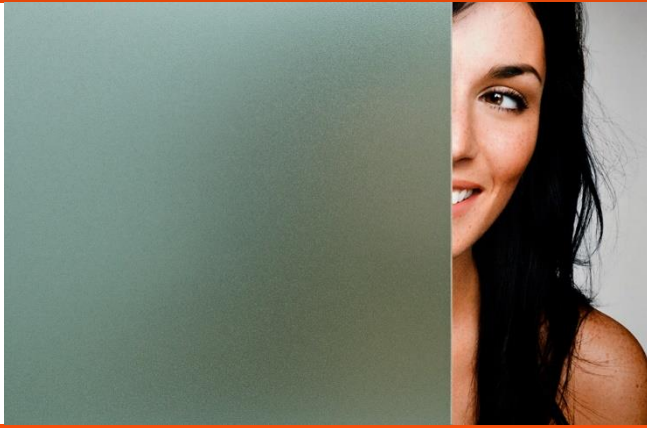


## SOLYX® Glass Finishes

### SX-1306 Tropical Teal Frost



#### Product Details

**SOLYX® SX-1306 Tropical Teal Frost** is a teal/grey tinted, translucent, embossed vinyl film that simulates sandblasted glass. Manufactured from durable polymeric PVC, it is supplied with a silicone coated liner which protects the clear, pressure-sensitive adhesive. This film is recommended for application to interior as well as exterior glass and is ideal for privacy, decorative, or architectural applications.

#### Flammability Rating

This product meets ASTM E84 and is classified as Class A as defined in NFPA 101, Life Safety Code®.

#### LEED Credit EQ 4.1 Low Emitting Materials, Adhesives & Sealants

This product has zero VOC content according to 40 CFR 59, Subpart D (EPA method 24).

#### Product Description

**SOLYX® SX-1306 Tropical Teal Frost** is a teal/grey tinted, translucent, embossed vinyl film that simulates sandblasted glass. It is ideal for obscuring direct visibility while allowing good light transmission.

#### Specifications

Product Code	SX-1306
Product Family	Frosted
Film Type	Polymeric Vinyl
Adhesive Type	Pressure-Sensitive
Usage	Interior or Exterior
Available Width(s)	60"
Full Roll Length	100 linear feet (30.5m)
Thickness	4 mil
Visible Light Transmission	27%
UV Transmission	2%
Infra-Red Transmission	45%

#### Installation and Warranty

##### Installation

Installation should be in accordance with the manufacturer's installation instructions. This film is applied using the same tools and technique used for window tinting films.

##### Warranty

This **SOLYX®** product will be free from defects in material and manufacture for a period of five (5) years from the date of application for interior installations and three (3) years for exterior installations. See warranty information for specific details.

#### Product Construction

##### Face Film

4 mil Polymeric Vinyl

##### Adhesive

Clear, Pressure-Sensitive

##### Release Liner

Silicone Coated

#### Product Distribution and Contact Information

##### Distribution

**SOLYX®** Decorative Films are available through authorized Installing Dealers, Distributors, or directly from Decorative Films, LLC.

Samples submitted upon request.

##### Contact Information

Decorative Films, LLC

1-888-657-5224

[www.decorativefilm.com](http://www.decorativefilm.com)